

VESSEL PARTICULARS

EX-HMAS BENALLA



GENERAL

PRIMARY ROLES	Offshore Support, Research, Survey, Liveaboard, Crew Transfer, Deck Cargo, Dive Support
MAKE	Eglo Engineering S.A
MODEL	Steel / Aluminium Catamaran Survey / Research Motor Launch Ship
LAUNCH / REFIT	1981 / 2024
OPERATING CLASS	Unlimited (25) & Australian Coastal (44 +6*)
CREW	Min 4 (subject to area & task)
STANDARD CREWING	6, Master, Mate, Engineer, 2 x GPH, 1 Cook
FLAG / REGISTRATION	Cook Islands (International) Formally AMSA
IMO / UVI	8717324

DIMENSIONS

LENGTH	34.0 m
BEAM	12.8 m
DRAFT	2.2 m
MOULDED DEPTH	3.98 m
LIGHTSHIP	312 T
MAX DISPLACEMENT	412 T
GRT	468 GRT

PROPULSION	
MAIN ENGINES	2 x Detroit 12v 92TA 1350kw combined
GEARBOX	Twin Disc Hydraulic shift with trolling slip.
PROPULSION	Twin Shaft, fixed blade propellers
BOW THRUSTER	N/A
STEERING STATIONS	Total 4
PERFORMANCE	
MAX SPEED	11 Knots
ECONOMIC CRUISE SPEED	8 Knots
MAX RANGE	3,600 NM
BOLLARD PULL	15T *
FUEL CONSUMPTION	
ANCHOR	45L/hr
ECONOMIC CRUISE	6kn – 110L combined / hr
80% MAX SPEED	8kn – 140L combined / hr
100% MAX SPEED	10kn – 276L combined / hr
NAVIGATION & COMMS	
RADAR	Northrop Grumman & Simrad & Furuno
PLOTTER	Time Zero Professional Navigator Software SIMRAD Multiscreen Backup with Navionics
GPS	Various
COMPASS	Comprehensive Gyro & Magnetic positioning systems.
AIS	A Class
RADIO	2 x Sailor VHF DSC 6222 1 x Sailor HF radio 6 X ICOM Handheld VHF
SOUNDER STANDARD INSTALL	Simrad
AUTOPILOT	Navipilot 4000
SATELLITE PHONE	Yes
GMDSS	Yes
INTERNET	Star link Global Marine Pack. Vessel wide WIFI, data options available on demand
SECURITY	CCTV Remote Monitorable



TANK CAPACITIES

FUEL CAPACITY	84,000 L Diesel
FRESH WATER	12,600 litres Bunkered, plus 5,000L /day desalinated
BLACKWATER	Sewage Treatment Plant 2.2m ³ Class A Marpol Approved

POWER SYSTEMS

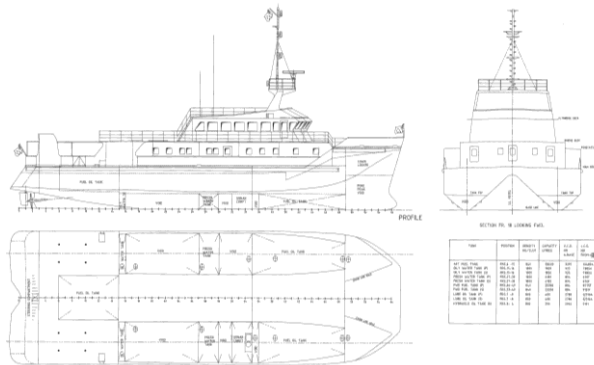
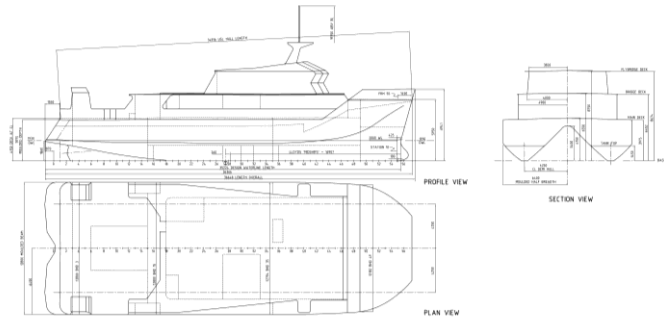
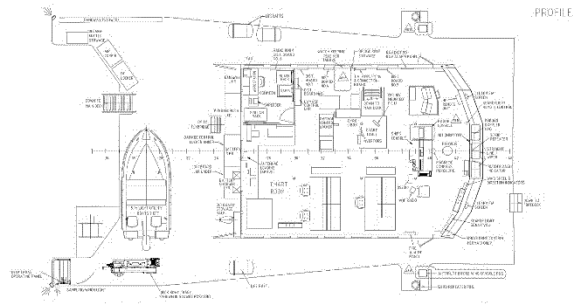
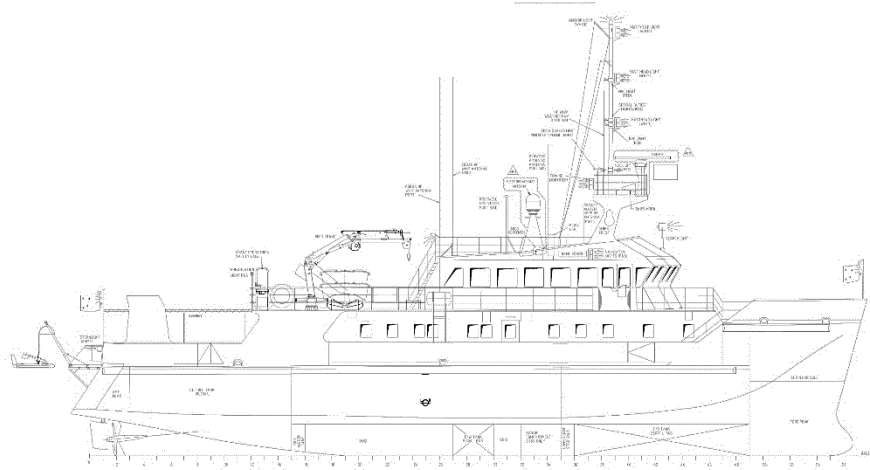
AUXILLARY ENGINES	2 x Detroit 671, 415v/240v output 90kVA ea
DC POWER	24v/12v
POWER PROTECTION	Onboard system power surge protection for all computer and workstations. Large capacity UPS power bank

DECK & LIFTING EQUIPMENT

DECK CARGO	40T Deck Capacity, 2t/m ² point load, 150m ² clear space
AFT DECK WINCH	30t Hydraulic winch for instrument / sonar / tow unit with 500m cable. Heavy-duty aft capstan and other various winch options.
TOW HOOK	Optional
CRANE	Palfinger PK11001MS2.0, 3.5t @ 3m and 850kg @10m
A FRAME	6T SWL luffing & 500kg SWL luffing tow-fish or other launch & retrieval dedicated system.
SURVEY CAPACITY	900mm moon pool, deployable stabilised pole with full head change options at sea, Side mountable brackets for various arms options and deployments. Multiple in hull transducer and instrument mounts
FUEL BUNKERING	Yes

ACCOMMODATION	
BERTHS	Total std 26 berths, 1 master cabin, 3 Officer & Crew Cabins, 5 cabins twin share single bunks, 3 Cabins Four share bunks, fully air-conditioned, First Aid / Sickbay Room, Multiple rooms with client workstations
TOILET	8
SHOWER	8
AIRCONDITIONING	Throughout
GALLEY	Full commercial grade galley
COLD & FROZEN	15m ³ Cool room, 12m ³ Freezer Store, Multiple small fridges in mess spaces. Additional deck storage optional if required.
SAFETY GEAR	
FIRE SYSTEM	Full Machinery Space Suppression systems
LIFERAFTS	2 x 25man SOLAS
STD TENDER/S	Std 2 x 5.8m Achilles with 15hp. Additional available as required. Optional up to 7.5m 2.5t transom loaded support vessel.
SAFETY COMPLIANCE	per AMSA, SOLAS & MCI required
GENERAL AMENITIES	
LOUNGE / MESSSES	3 with TV
CLIENT WORKSTATIONS	30+
WORKSHOP / TECHNICIANS	1 Dedicated technicians / wet lab, 2 engine room
LABORATORIES	4+
CLIENT OFFICES	3+
MEETING ROOM	2+
LAUNDRY	2 Washer & 2 Dryer
OPTIONAL SERVICES	
SCUBA EQUIPMENT	Yes
H.P. AIR COMPRESSOR	Yes
NITROX & OTHER BREATHING GASES	Yes
DIVER PROPULSION VEHICLES	Yes
SCIENTIFIC MONITORING EQUIPMENT	Yes
SAMPLING EQUIPMENT	Yes
UW SURVEY EQUIPMENT	Yes
UNDERWATER DRONE	Yes
DIVE SUPPORT – RECREATIONAL, TECHNICAL & COMMERCIAL	Yes

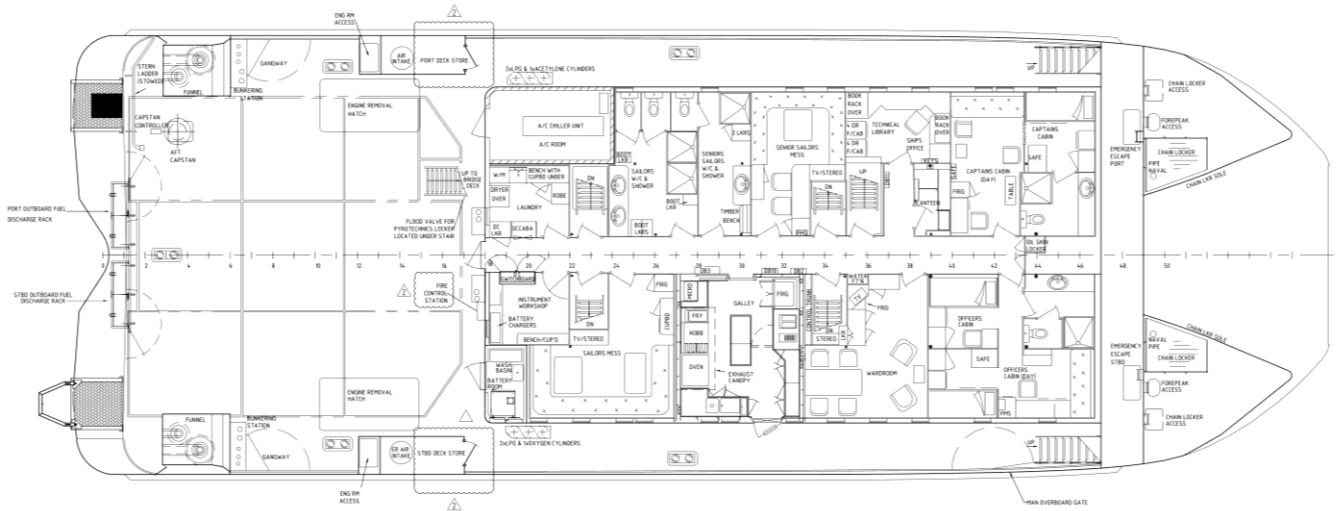
VESSEL DRAWINGS



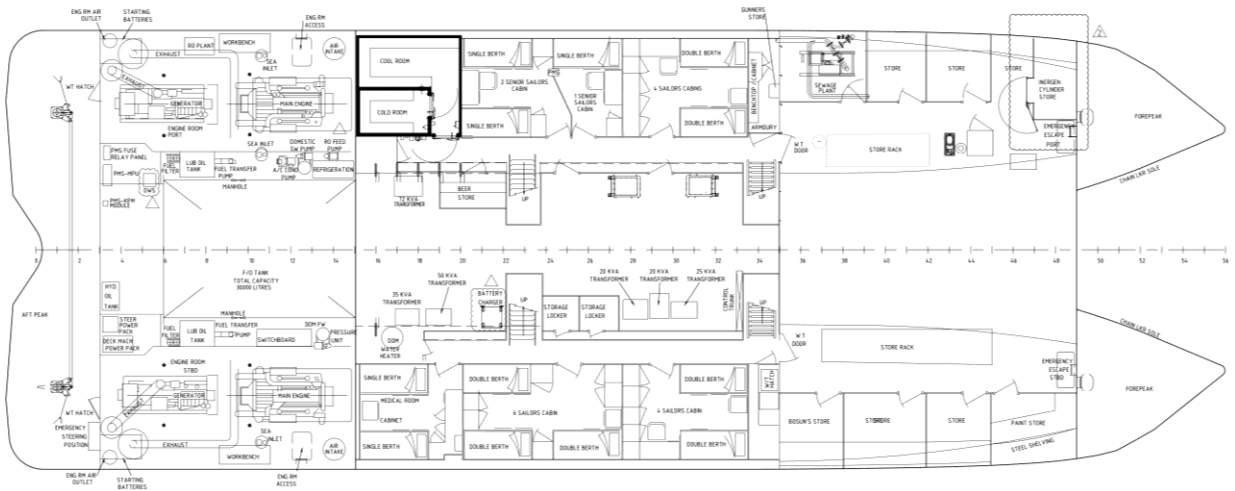


MARINE SERVICES

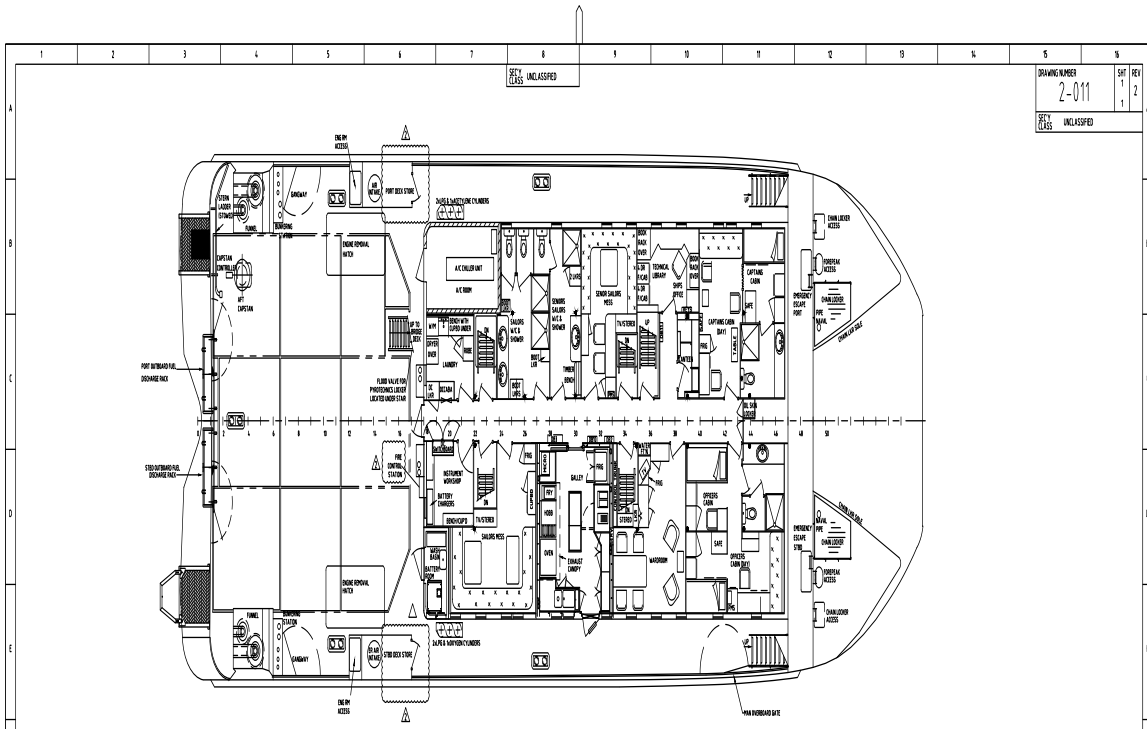
www.marineservices.com.au



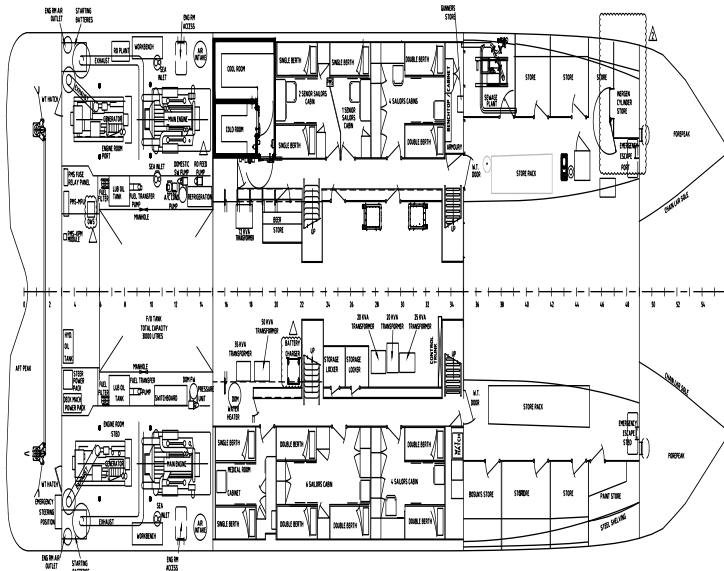
MAIN DECK PLAN



BELOW MAIN DECK PLAN



MAIN DECK PLAN

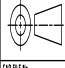


BELOW MAIN DECK PLAN

NOTE:
REV Z CHANGES APPLICABLE TO HMAS PALUMA
AND HMAS MERMAID ONLY

NO.	DATE	BY	DESCRIPTION OF REVISION
1			
2			
3			
4			
5			
6			
7			
8			
9			
10			
11			
12			
13			
14			
15			

DO NOT SCALE



CD FILE NO

SECURITY CLASS CODE U

DATE APPROVED

DEPARTMENT OF DEFENCE (NAVY) AUSTRALIA			
SHIP ESTABLISHMENT	SURVEY MOTOR LAUNCH	SECURITY CLASS	UNCLASSIFIED
TITLE	GENERAL ARRANGEMENT	SCALE	NTS
TITLE	MAIN DECK PLAN & BELOW DECK PLAN	DRAWING NUMBER	2-011
DOC NO	PROJECT CODE N2004-06	REFNO/TECH SUBCODE	000
DOC CODE		DOC CODE	
DOC TYPE		DOC TYPE	DX

VESSEL PHOTOS





