



# MARINE SERVICES

---

## INDUSTRY, FLEET & OFFSHORE

# CAPABILITIES

---

MARITIME OPERATIONS & SUPPORT, COMMERCIAL & SCIENTIFIC DIVING



## ABOUT US



Welcome to the diversified world of Marine Services, where our sub-brands Marine Services Asia Pacific, Marine Industries Victoria, and Marine Services International Group excel in delivering top-tier maritime solutions.



Whether catering to local, regional, Australia-wide, or international markets, our offerings are backed by stringent industry compliance standards and guided by experienced leaders in the maritime sector. Each division is uniquely positioned to meet the specific needs of their respective markets, ensuring unparalleled service and expertise across the globe.

Our team has been involved in commercial maritime operations and logistics across Australia and Asia Pacific regions for over 30 years. Our core expertise lies in commercial vessel supply and operations, which has increased capabilities for **onshore, near shore and offshore operations and logistics support** to meet the demands of numerous commercial applications.

Boasting multiple crews of highly skilled and experienced professional vessel masters, deck personnel and marine engineers as well as commercial and scientific diving services; employed locally, Australia wide and internationally; we are proud to be one of the largest locally based fleets in Victoria, Australia and have now expanded with fleets positioned in Cairns, Queensland and internationally. Our fleet is made up of Domestic Commercial Vessels, approved and **accredited through the Australian Maritime Safety Authority (AMSA) and internationally flagged vessels** from the Cook Islands.





# OUR COMMITMENT

## DIVERSITY WITHIN THE WORKFORCE

Marine Services actively seeks to employ Indigenous Australians and local employees to ensure a stable and diverse workplace.

The knowledge and traditional practices of Indigenous Australians and their communities, are invaluable in environmental management.

Our inclusive workplace culture values, appreciates and welcomes employees of all backgrounds and diverse characteristics.

## AUSTRALIAN OWNED & OPERATED

Our team can mobilise across the country (or globally) from our primary bases in:

- PORT PHILLIP BAY, VICTORIA
- CAIRNS & THE GREAT BARRIER REEF, QUEENSLAND

Situated in the heartland of some of the most significant ecological and maritime systems in Australia, our unrivalled diversity and experience is ready to meet your operational requirements. Our experience is your assurance of a timely and professional service nationwide.

## SUSTAINABLE WORKPLACE

Marine Services is committed to ensuring that its activities shall have **minimal impact upon the environment**. In order to protect our oceans, marine life and employees, we must continue to practice safe, low impact diving and vessel activities.

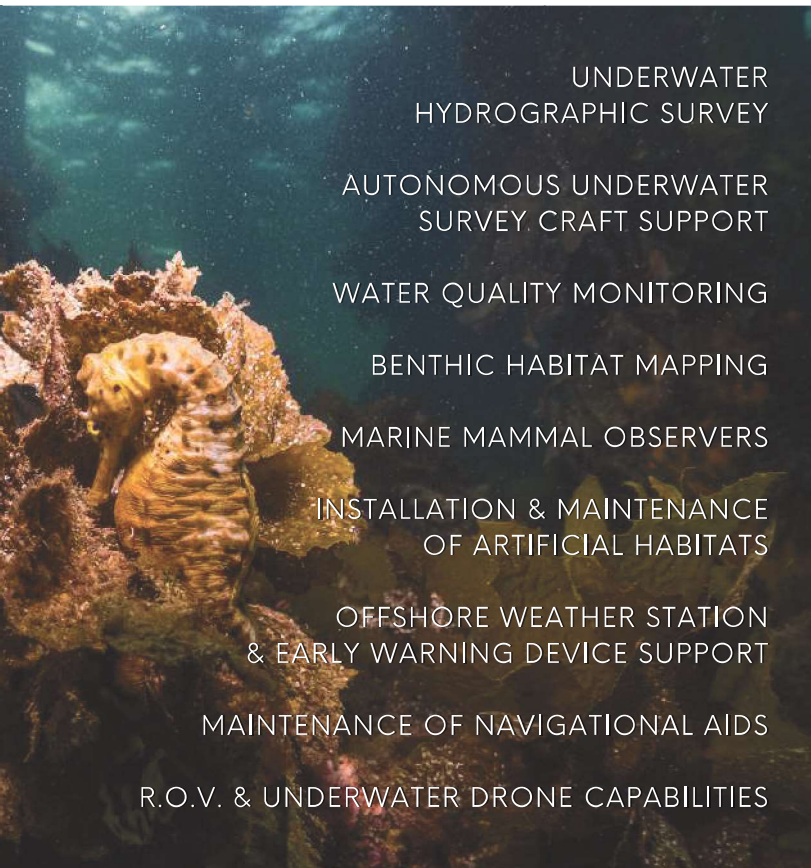
Our current achievements and goals for the future include:

- Electric vessels to reduce carbon footprint and emissions
- Carbon offsets through Wind Farms and Hybrid Marine Propulsion
- Sourcing socially and environmentally responsible contracts
- Great Barrier Reef restoration and research
- Crown of Thorns Starfish control program
- Corporate Social Responsibility

# INDUSTRY EXPERTISE

-  **Experienced & Compliant Systems** for Tier 1 Contractor needs
-  **Multi-purpose vessels**, utility, crew transfer vessels & emergency evacuation capabilities
-  **30 years of dive operations & supervision experience** in Australian and surrounding waters
-  Highly skilled & diverse team of **maritime professionals based locally and across the country**
-  Experience & supplier involvement in **Local Government & Defence projects**
-  Specialist in **Maritime support, Environmental services & Diving operations**
-  Local work yards in **Victoria and Queensland**
-  **Expert Maritime knowledge** of Australian and surrounding waters and project specific sites
-  **Custom vessel supplier** and specialised machinery

# ENVIRONMENTAL SERVICES



UNDERWATER  
HYDROGRAPHIC SURVEY

AUTONOMOUS UNDERWATER  
SURVEY CRAFT SUPPORT

WATER QUALITY MONITORING

BENTHIC HABITAT MAPPING

MARINE MAMMAL OBSERVERS

INSTALLATION & MAINTENANCE  
OF ARTIFICIAL HABITATS

OFFSHORE WEATHER STATION  
& EARLY WARNING DEVICE SUPPORT

MAINTENANCE OF NAVIGATIONAL AIDS

R.O.V. & UNDERWATER DRONE CAPABILITIES

## LOCATION

**Bases in Queensland and Victoria;** ensure the fast and reliable mobility of assets to any job or site by water or road



## KNOWLEDGE

An extensive team of experienced Mariners, Marine Scientists and Scientific Divers to undertake **multiple aspects of any job**



## ACQUISITION

**Acquisition and manufacturing of project specific equipment** to suit the needs of the Client and the tasks



## PERSONNEL

**Highly motivated, experienced personnel** professionally developed by our team of trainers



## SAFETY

**Quality Control, Risk Management & Safe Work Methods**, extensive electronic **SMS** for each vessel - personalised for projects and service delivery



## COMPLIANCE

**Systems created for ISO 9001, 14001 & 45001; STCW, IMO, AMSA, SOLAS regulations; MARPOL, Biosecurity and more**





## OFFSHORE CAPABILITIES

Marine Services specialises in offshore support, vessel operations, and logistics; catering to both domestic and international markets with comprehensive capabilities.

As part of our growth strategy, Marine Services has acquired a large fleet of vessels, providing us with important and varied Offshore capabilities, suitable for global applications and with environmental sustainability at the forefront of our considerations.

Based in Australia, we leverage our strategic location to efficiently manage and execute a wide range of offshore operations. Our fleet of specialised vessels is equipped with state-of-the-art technology, manned by highly skilled personnel trained to handle diverse challenges at sea.

Our operational expertise in vessel support and capabilities spans across diverse environments, from shallow waters to deep-sea installations, supported by a robust fleet and a commitment to safety and efficiency. Our logistics services are designed to optimise supply chain management, facilitating timely delivery of equipment, personnel, and materials to regional, national and offshore sites.

Whether it's in exploration, production, or maintenance phases, our integrated approach ensures reliable support to minimise cost and maximise value.

We will continue to focus on providing highly efficient, safe, and comprehensive maritime services to build a sustainable future for all involved, no matter the size of the project.

## MINIMISE COST | MAXIMISE VALUE

## VESSEL FLEET



### **BENALLA**

**34.00M**

**MOTOR SURVEY LAUNCH  
STEEL & ALUMINIUM MULTIHULL**  
34.00M (L) 12.80M (B) 3.98M (D)

Multipurpose, Survey, Research, Liveaboard,  
Crew Support, Scientific Charter, Anchor  
Handling, Nav Aid Maintenance, Dive Support,  
Buoy deployment retrieval

**CLASS:** MCI UNLIMITED



### **TOANUI**

**23.99M**

**MULTIPURPOSE ALUMINIUM  
CATAMARAN**  
23.99M (L) 8.0M (B) 3.4M (D)

Multipurpose, Survey, Research, Liveaboard,  
Crew Support, Scientific Charter, Anchor  
Handling, Nav Aid Maintenance, Dive Support,  
Buoy deployment retrieval

**CLASS:** MCI UNLIMITED



### **ESCAPE**

**23.00M**

**MULTIPURPOSE ALUMINIUM  
MONOHULL**  
23.00M (L) 6.4M (B) 2.5M (D)

Multipurpose, Survey, Research, Liveaboard,  
Crew Support, Scientific Charter, Anchor  
Handling, Nav Aid Maintenance, Dive Support,  
Buoy deployment retrieval

**CLASS:** AMSA 1D, 1C & 2B EXTENDED



## DANGERFIELD

17.90M

### MULTIPURPOSE STEEL TWIN SCREW CATAMARAN

17.9M (L) 7.4M (B) 2.18M (D)

Multipurpose construction support, cargo handling, anchor handling, navigational aid maintenance, dive support, buoy deployment retrieval, barge movements, salvage, shallow water capable.

**CLASS:** AMSA 2B & 2C



## TITAN

14.90M

### STEEL TUG TWIN SCREW

14.9M (L) 5.43M (B) 2.45M (D)

Towing, anchor handling, barge support, refuelling capabilities

**CLASS:** AMSA 2B & 2C



## PHOENIX

11.99M

### MULTIPURPOSE TWIN OUTBOARD ALUMINIUM CAT

11.99M (L) 5.98M (B) 1.25M (D)

Construction support, cargo handling, crew transfer, landing barge, RORO, anchor handling, navigational aid maintenance, dive support, buoy deployment retrieval, salvage, barge movements, shallow water capable.

**CLASS:** AMSA 1D & 2C

## VESSEL FLEET



### DBI

24.00M

#### CONSTRUCTION & MATERIAL SUPPORT STEEL BARGE

24.00M (L) 8.5M (B) 2.0M (D)

Construction barge, crane / excavator rated,  
cargo handling, spud anchoring.

CLASS: AMSA D CLASS



### MINOTAUR

11.20M

#### MULTIPURPOSE ALUMINIUM CATAMARAN

11.2M (L) 3.5M (B) 1.2M (D)

Barge support, towing, lines boat, crew  
transfer, general utility.

CLASS: AMSA 2C



### LAVENA II

14.60M

#### MATERIAL & CONSTRUCTION TWIN OUTBOARD STEEL POWERED BARGE

14.6M (L) 6.6M (B) 2.1M (D)

Multipurpose construction support, cargo  
handling, crane, EWP, excavator capable,  
landing barge, RORO, buoy deployment  
retrieval, salvage, barge movements, shallow  
water capable, spud anchoring.

CLASS: AMSA 2D





## SEADRAGON

11.52M

MULTIPURPOSE TWIN SCREW  
ALUMINIUM MONOHULL

11.52 M (L) 4.2M (B) 2.4M (D)

Multipurpose, survey, research, crew support,  
scientific charter, dive support.

CLASS: AMSA 1C & 1D



## MEDUSA II

11.40M

MULTIPURPOSE TWIN STERN DRIVE  
ALUMINIUM MONOHULL

11.4M (L) 3.8M (B) 1.12M (D)

Multipurpose, survey, research, crew support,  
scientific charter, dive support.

CLASS: AMSA 1C & 1D



## HERMES

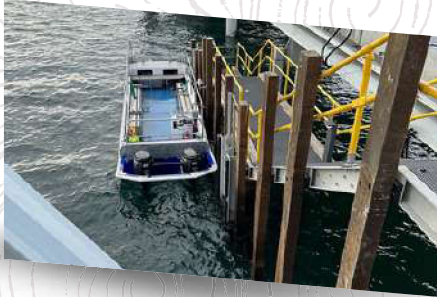
10.00M

MULTIPURPOSE TWIN OUTBOARD  
ALUMINIUM CATAMARAN

10.0M (L) 3.4M (B) 0.91M (D)

Multipurpose, survey, research, crew support,  
scientific charter, dive support.

CLASS: AMSA 1D, 1C & 3C



**WORK PUNT 07 7.34M**

UTILITY VESSEL / TENDER  
TWIN OUTBOARD ALUMINIUM  
FLAT BOTTOM UTILITY

CLASS: AMSA 2D & 2C



**ENFORCER 7.75M**

RIB VESSEL / TENDER  
SEMI RIGID MONOHULL RIB  
CENTRE CONSOLE OUTBOARD

CLASS: 2D NSV



**MERCATOR 7.75M**

DIVE SUPPORT / UTILITY  
MULTIPURPOSE – TWIN OUTBOARD  
ALUMINIUM MONOHULL

CLASS: AMSA 2D & 2C



**LIL JACK**

UTILITY VESSEL / TENDER  
ALUMINIUM MONOHULL TILLER  
OUTBOARD



**ORANGE ROUGHY**

RIB VESSEL / TENDER  
SEMI RIGID MONOHULL RIB  
CENTRE CONSOLE OUTBOARD



**LIL JILL**

UTILITY VESSEL / TENDER  
ALUMINIUM MONOHULL TILLER  
OUTBOARD



**ACHILLES 1**

INFLATABLE TENDER  
INFLATABLE KEEL RIB TENDER  
WITH TILLER STEER OUTBOARD



**ACHILLES 2**

INFLATABLE TENDER  
INFLATABLE KEEL RIB TENDER  
WITH TILLER STEEL OUTBOARD

# ESTABLISHED OPERATING BASES

Situated in the heartland of some of the most significant ecological and maritime systems in Australia, our unrivalled diversity and experience is ready to meet your operational requirements. Our experience is your assurance of a timely and professional service nationwide.

## QUEENSLAND

North Wharf in Cairns Harbour is a multi-purpose shipyard and marine facility.

Situated on the east side of Trinity Inlet in Cairns Port, it is approximately 30 minutes from Portsmith via road or 5 minutes by boat.

Set conveniently away from other congested areas of the Port, North Wharf is not subject to tidal or pilotage restrictions. Located on the east side of Cairns harbour, it is approximately 30 minutes from Portsmith via road or 5 minutes by boat.

Due to its position and amenities, North Wharf may be conveniently used as a raw material and cargo load-out facility, a holding yard, or precast facility.

It has deep water access on all tides and a roll-on-roll-off ramp for loading / offloading / barge operations. There's ample space for project deliveries, machinery, freight, container storage and storage shed facilities. Furthermore, North Wharf has moorings situated in Cairns Harbour.



## KEY FACTORS FOR OUR BASE IN CAIRNS

- Load & Offload Facility
- Storage Facility
- Cargo / Freight
- Vessels & Machinery
- Shipping Containers
- Leasing Options
- Roll-On-Roll-Off Ramp
- Barge Operations
- Cairns Inlet Moorings
- Precast Facility



## VICTORIA

With a long history of maritime logistics and operations in Victoria, we have numerous locations for mobilisation and storage of assets, including:

- **Main Geelong workshop** and laydown yards – Moolap
- **Port of Geelong** – Load-out facilities
- **Port of Hastings** – Support yard and fabrication centre, Dromana
- **Port of Welshpool** – Vessel berthing, loading and Mechanical base and storage
- **Queenscliff** – Training facility with custom-built pool, compressor, commercial diving services



Our Port Welshpool base gives the greatest operational flexibility as a regional base to support and operate from to manage vessel departure and arrivals as well as the ability to perform both in-water maintenance requirements and either a temporary retrieval from the water via a slipway or alternatively a craned to hardstand option.

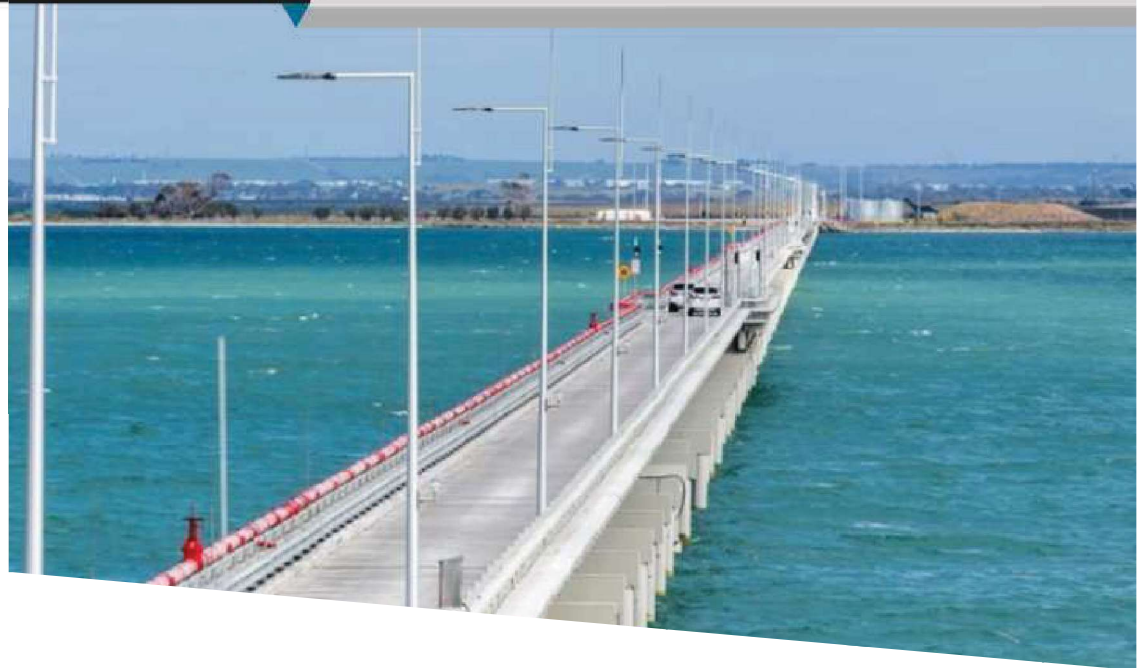
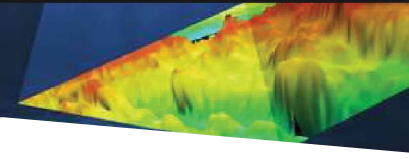
The town also is centrally located and can accommodate transient and permanent workers. operational areas and minimising mobilisation costs and time.

Port Welshpool is managed under local government and as such is somewhat cost-secured for future access and various activity supplies.

## KEY FACTORS OF OUR REGIONAL BASES IN VICTORIA

- Commercial working port - minimal access restrictions
- Vessel storage Hardstand
- Vessel transport, launch, deployment and retrieval assistance
- Vessel AMSA and / or other continued compliance assistance
- Non-tidal affected sea access for vessels less than 2m draft (Port Welshpool)
- Sheltered and secured harbour
- Dedicated berthing access with private power and water supplied
- Small vessel slipway for economic haul out and launch
- Large boat ramps
- Crane setup points close to the water for launch / retrieval capability
- Multiple storage space opportunities for vessels, spares and other supply needs
- Channel to open sea access is the shortest option available
- No channel access fees or imposed docking / stevedore charges
- Local accommodation options
- Diesel and unleaded refuelling point at wharfs
- Easy and safe vessel loading supplies / crew / technicians
- Custom-built training facility for commercial diving and maritime training; 3m pool and compressors





## RECENT PROJECTS

- **Alcatel Submarine Networks** – Timor-Leste South Submarine Cable, Route Clearance Vessel
- **BOM** – service for Willis Island crew transfers
- **CSIR** – Coral Spawning
- **Boskalis** – Hydrographic survey and AUV support
- **AIMS** – Lighthouse and Navigational Maintenance,
- **Citizens of the Great Barrier Reef** – Reef survey trips
- **North Marine** – Supply & operation offshore support, dive support, Mooring maintenance
- **Utopia Productions** – International Film Production Support PNG
- **TAMS** – Cargo transfer and remote operations support
- **New Zealand Offshore Services** – Vessel supply - mining operations NZ
- **Port of Hastings** – Security patrol ships at berth (Hydrogen ship)
- **Port of Melbourne** – Locating and recovery of lost ships anchor
- **RIVA** – Tug vessel assistance refinery wharf piping upgrade.
- **CPB Contractors** – Point Wilson Waterside Infrastructure and Remediation project (DoD)
- **CPB / John Holland JV** – Westgate Tunnel Project
- **Bhagwan Marine** – Supply & operate various vessels for marine construction, crew transfer
- **Parks Victoria** – Re-construction of heritage marker in Port Phillip Bay
- **East West Dive & Salvage** – Emergency recovery of stranded vessels offshore Bass Strait

# TRAINING

Our vision is to create a comprehensive development program from the Marine and Scientific sectors combined; providing industry workers with professional and nationally accredited training and recognition.

Our commercially recognised training and research programs meet and exceed international marine scientific diving requirements and has been created with the Australian Government to train scientists that take part in marine research activities; such as surveying, monitoring and inspecting.

- **Provide cardiopulmonary resuscitation** **HLTAID009**
- **Provide First Aid** **HLTAID011**
- **Provide advanced resuscitation** **HLTAID015**
- **Manage First Aid services & resources** **HLTAID016**
- **Certificate I in Maritime Operations (Coxswain Grade II NC)** **MAR10418**
- **Certificate III in Maritime Operations (Master <24m NC)** **MAR30918**
- **Perform Restricted Diving for Scientific Purposes** **AHCLPW307**
- **Surface Supply Breathing Apparatus** **SFIDIV302 & SFIDIV304**

Our trainers have a combined 50 years' experience training industry professionals and governing bodies. Most, if not all, of our recreational courses portfolio can be crossed over with our expert team to nationally recognised certificates of competency.





# MARINE SERVICES

[www.marineservices.com.au](http://www.marineservices.com.au)

**MINIMISE COST | MAXIMISE VALUE**



[www.marineservicesasiapacific.com.au](http://www.marineservicesasiapacific.com.au)

0419 886 212

[info@marineservicesasiapacific.com.au](mailto:info@marineservicesasiapacific.com.au)

